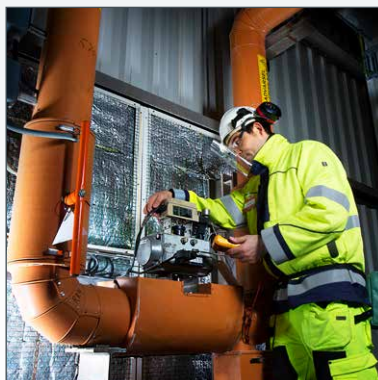


# SOLUTIONS



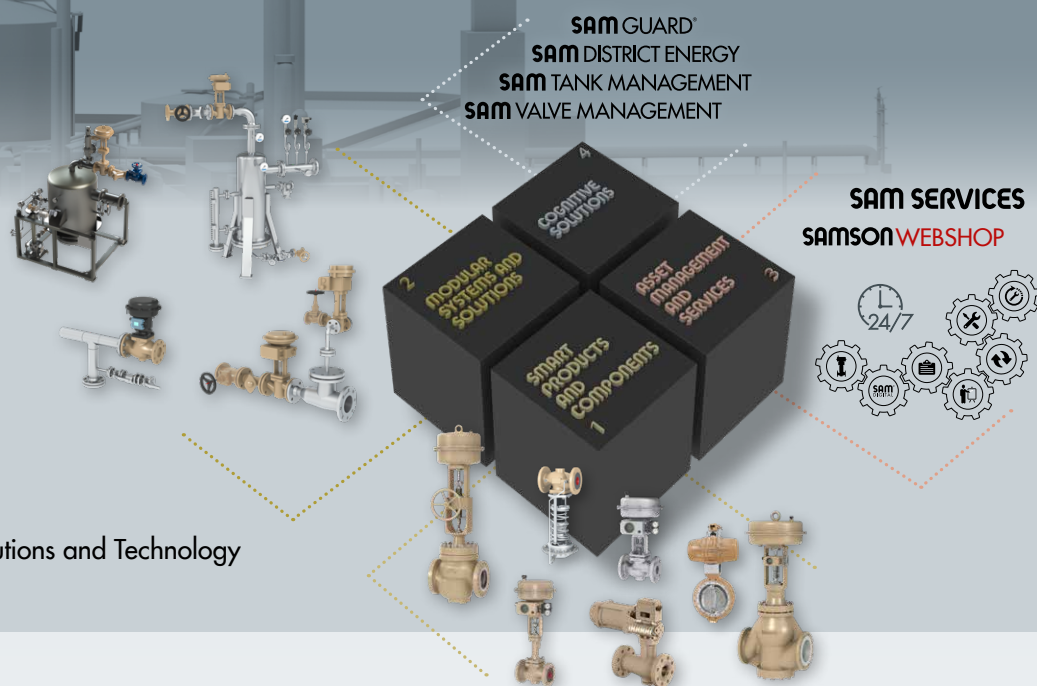
## INDUSTRY - OFFSHORE - RENEWABLES



**SMART IN FLOW CONTROL**

## HIGHLIGHTS OF OUR INDUSTRY SOLUTIONS

Four Quadrants Strategy: Solutions and Technology



**SAMSON** – Founded in 1907, SAMSON has since become a worldwide leader in the manufacture of expertly engineered control valves, positioners, and other valve accessories for all industrial processes. We provide our customers with a full range of valve engineering products and services from a single source.

**MATEK-SAMSON** – has represented SAMSON in Norway since 1989. As a leading supplier of all types of control valves and on/off valves, we offer engineered solutions for the process industry, shipping as well as oil and gas.

**Design and engineering** – Our project department handles specific customer requirements within documentation and project management. We perform valve sizing based on customer process data. Complete technical solutions and material selection are performed by our skilled engineers. We assist with consulting.

**High system availability** – Our products are designed to function reliably in industrial processes. High plant availability is the top priority. Our genuine spare parts meet the same high quality standards that apply to all products made by SAMSON. Our tailored spare parts packages are the basis for efficient maintenance strategies.

**Entire life cycle** – Our services cover the entire life cycle of our control equipment. They include simple troubleshooting as well as comprehensive service agreements for entire projects. We provide the services our customers need to ensure the availability of their plants and production processes in the long term.

**Cost reductions** – Upgrading can be a cost-effective alternative to building a new plant. With our comprehensive services, we assist our customers in modernizing existing installations from the planning to the start-up phases to achieve optimum plant efficiency. Our experts also work out how our customers can achieve additional cost reductions.



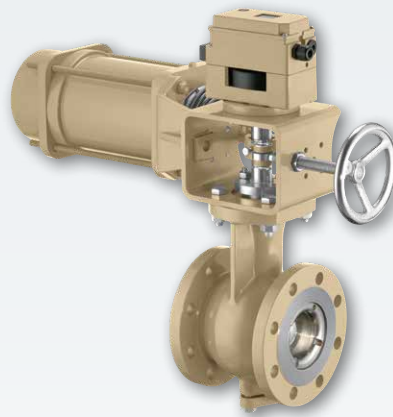
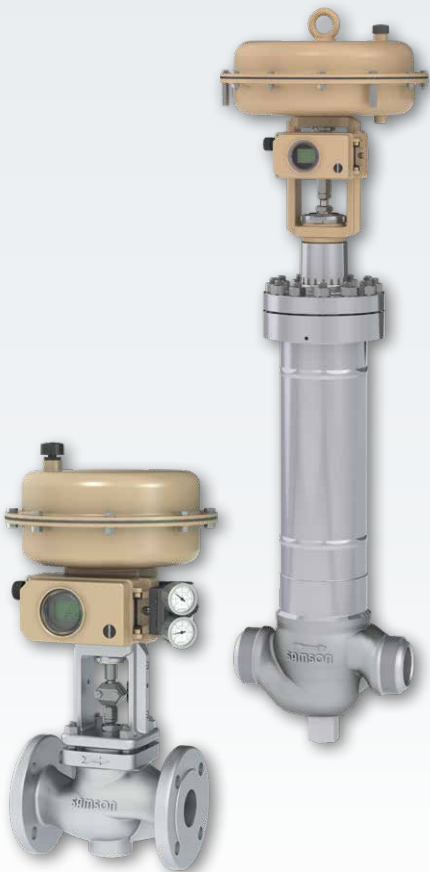
ISO 9001



**SAMSON** – For over one hundred years, SAMSON has developed and manufactured control equipment for industrial processes. From rugged self-operated regulators to highly specialized control valves for industrial processes, SAMSON manufactures valves in all common sizes, in standard materials and exotic alloys, equipped with different actuators, tailor made for the specific demands of each application.

**SAMSON VETEC** – The Maxifluss control valves by VETEC bring together the strengths of control valves, butterfly valves and ball valves. Their universal design makes them suitable for use in both standard and critical applications. Thanks to the eccentric rotary plug, the plug touches the seat only when the valve is fully closed. This ensures exact control and a high rangeability.

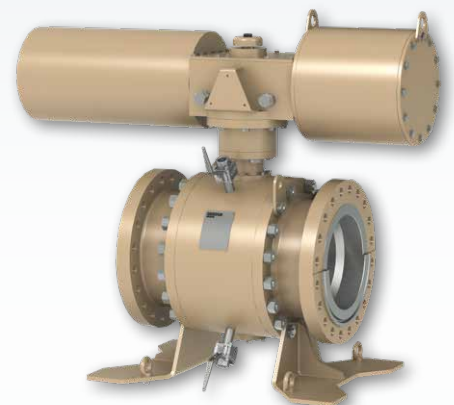
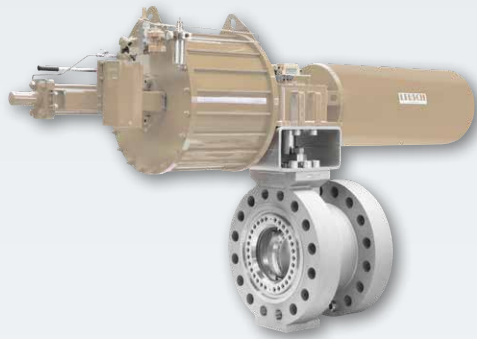
**SAMSON RINGO** – The valve specialist is renowned for valves in large nominal sizes and high pressure ratings for power stations, as well as the oil and gas sector. Its product range includes ball valves, control valves, gate, globe and check valves, choke valves and axial flow valves as well as special valves, such as subsea valves or double block and bleed valves.



**SAMSON LEUSCH** – The specialized manufacturer focuses on valves for pipe diameters up to three meters. LEUSCH's control and shut-off butterfly valves, ball valves and segmented ball valves are equipped with soft or metal seals, are suitable for both extremely low and extremely high temperatures from  $-196$  to  $+1000$  °C and can handle high pressure ratings up to PN 420 or Class 2500.

**SAMSON PFEIFFER** – The high-quality, homogeneous polymer linings, such as PTFE and PFA, are used in control, butterfly and ball valves to provide solutions for numerous applications. A wide product range of ball and butterfly valves made of metal alloys, turnkey pigging systems, pigging components and sampling valve technology round off the product portfolio.

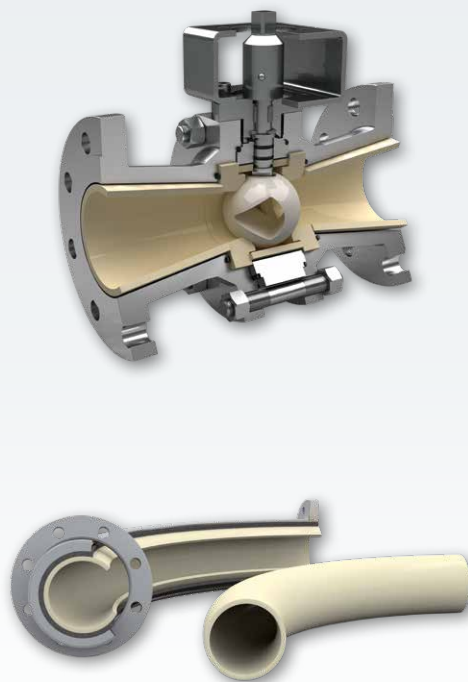
**SAMSON STARLINE** – Forged steel ball valves in sizes NPS  $\frac{1}{4}$  to 12 and ANSI Class 150 to 2500 as well as in API 6A pressure ratings are mainly used in special applications, such as upstream, cryogenic and high-temperature service. Thanks to superior quality, STARLINE is a top supplier to all major oil and gas companies as well as EPC contractors.



**FOCUS-1** is the first smart meter valve specifically developed for the process industry 4.0. This multifunctional smart flow control instrument – developed by FOCUS-ON, a SAMSON and KROHNE company – combines sensors, actuator and control functionality in one device.

**SAMSON CERA SYSTEM** – High-performance ceramic materials provide solutions wherever standard valves reach their limits in resistance to wear, corrosion and high temperatures. CERA SYSTEM specializes in ball and sliding disk valves as well as pipe components with ceramic linings. Industry-specific applications catered for include coal gasification and photovoltaics.

**SAMSON AIR TORQUE** – Manufacturing pneumatic rotary actuators for any kind of rotary control valve, AIR TORQUE has become the world leader in this special field. Technical features of the actuators include external adjustment of the end positions and their involute gearing, which continuously converts the travel movement into a rotary motion without any friction.



# SAMSON AT A GLANCE



## STAFF

- Worldwide 4,500
- Europe 3,600
- Asia 600
- Americas 200
- Frankfurt am Main, Germany 1,900

## INDUSTRIES AND APPLICATIONS

- Chemicals and petrochemicals
- Food and beverages
- Pharmaceuticals and biotechnology
- Oil and gas
- Liquefied Natural Gas (LNG)
- Marine equipment
- Power and energy
- Industrial gases
- Cryogenic applications
- District energy and building automation
- Metallurgy and mining
- Pulp and paper
- Water technology
- Other industries

## PRODUCTS

- Valves
- Self-operated regulators
- Actuators
- Positioners and valve accessories
- Signal converters
- Controllers and automation systems
- Sensors and thermostats
- Digital solutions

## SALES SITES

- More than 60 subsidiaries  
in over 40 countries
- More than 200 representatives

## PRODUCTION SITES

- SAMSON Germany, Frankfurt, established in 1916  
Total plot and production area: 150,000 m<sup>2</sup>
- SAMSON France, Lyon, established in 1962  
Total plot and production area: 23,400 m<sup>2</sup>
- SAMSON Turkey, Istanbul, established in 1984  
Total plot and production area: 11,100 m<sup>2</sup>
- SAMSON USA, Baytown, TX, established in 1992  
Total plot and production area: 20,000 m<sup>2</sup>
- SAMSON China, Beijing, established in 1998  
Total plot and production area: 47,000 m<sup>2</sup>
- SAMSON India, Pune district, established in 1999  
Total plot and production area: 28,000 m<sup>2</sup>
- SAMSON AIR TORQUE, Bergamo, Italy  
Total plot and production area: 27,000 m<sup>2</sup>
- SAMSON CERA SYSTEM, Hermsdorf, Germany  
Total plot and production area: 14,700 m<sup>2</sup>
- SAMSON KT-ELEKTRONIK, Berlin, Germany  
Total plot and production area: 1,100 m<sup>2</sup>
- SAMSON LEUSCH, Neuss, Germany  
Total plot and production area: 18,400 m<sup>2</sup>
- SAMSON PFEIFFER, Kempen, Germany  
Total plot and production area: 20,300 m<sup>2</sup>
- SAMSON RINGO, Zaragoza, Spain  
Total plot and production area: 19,000 m<sup>2</sup>
- SAMSON SED, Bad Rappenau, Germany  
Total plot and production area: 10,400 m<sup>2</sup>
- SAMSON STARLINE, Bergamo, Italy  
Total plot and production area: 27,000 m<sup>2</sup>
- SAMSON VDH PRODUCTS, the Netherlands  
Total plot and production area: 12,000 m<sup>2</sup>
- SAMSON VETEC, Speyer, Germany  
Total plot and production area: 27,100 m<sup>2</sup>

## MATEK-SAMSON REGULERING AS

Porsgrunnsvn. 4 · 3733 Skien  
Phone: +47 35900870 · Fax: +47 35900880  
E-mail: post@matek.no  
Internet: norway.samsongroup.com

**SMART IN FLOW CONTROL**