

## Pneumatically Operated Valve DN 8 - 20 mm (3/8" - 3/4")

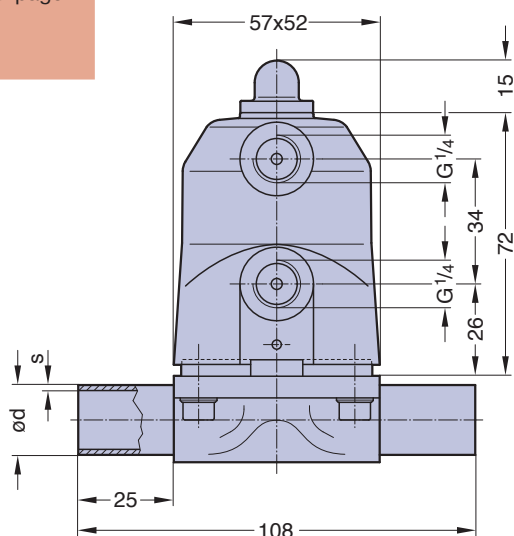


HS-Version, Cf. 1, 2 & 3



HS-Version, Cf. 4 & 5

Butt weld ends  
MA 10  
Fold out page 21



### Features

- Efficient plastic piston actuator direct assembled with the valve body
- Control air connection 90° to flow direction for side by side or other installations saving space
- Compact design, the outside diameter of the actuator is the same size as the bonnet flange
- Actuator high resistance to heat transfer
- Smooth exterior design ideal for wash downs
- Encapsulated diaphragm
- Optical indicator
- CDSA sealing concept, see page 32

### Optional

- Available with a wide range of control equipment and accessories see page 132 to 139, also for retrofitting
- Control air connection in flow direction

### Technical Data

- Control function (Cf.): Pneumatically operated  
 Fail safe close (NC): Cf. 1 & 4  
 Fail safe open (NO): Cf. 2 & 5  
 Double acting (DA): Cf. 3  
 At control function NO/DA higher control pressure than required may affect the lifetime of the working diaphragm.
- Direction  
 Control connection: At Cf. 1, 2 & 3, 90° to flow direction, standard  
 At Cf. 4 & 5 in flow direction
- Max. working pressure: Unidirectional (delta p = 100%)  
 EPDM diaphragm 8 bar (115 psi)  
 PTFE diaphragm 7 bar (100 psi)

Higher working pressure may be achieved with different actuator. Please consult a SED factory representative for working pressure above the indicated maximum.

- Max. working temperature: PS-Version 80°C (176°F)  
 HS-Version 150°C (300°F)  
 dependent on Application
- Control pressure: Cf. 1 & 4 4,2 - 7 bar (60 - 100 psi)  
 Cf. 2, 3 & 5 4 - 5 bar (60 - 72 psi)
- Diaphragm material: EPDM or PTFE
- Valve body material: Forged 1.4435/ 316 L ASME/BPE  
 Investment cast 1.4435/ 316 L  
 Other alloys
- End connection: Butt weld ends see fold out page 21  
 Clamps and flanges see page 22 to 24  
 Special ends
- Actuators suitable for: Two-Way bodies  
 Welded configurations
- Flow rate: Kv in m³/h (Cv in GPM) see page 9
- Diaphragm size: MA 10
- Weight: ca. 0,6 kg

DN (mm)	MA	Filling volume (NL)	
		NC	NO/DA
8-20	10	0,027	0,027

Valve type overview see page 26 and 27.  
 Ordering key see page 66 to 68.